



MAKERS OF RESPIRATORY VALVES SINCE 1938

**HANS RUDOLPH, inc.**

www.rudolphkc.com

TEL: (913) 422-7788 U.S.A. & CANADA (800) 456-6695  
FAX: (913) 422-3337 E-Mail: hri@rudolphkc.com  
8325 COLE PARKWAY, SHAWNEE, KANSAS 66227 U.S.A.

Data Sheet . . .

## HANS RUDOLPH SILICONE RUBBER FACE MASKS

### FULL RANGE OF MASK SIZES

Eight sizes of masks in two styles:

8900 Nasal & Mouth Breathing; 7900 Mouth Breathing Only



Masks & Head Cap Assembly shown with Custom Adapters.

Hans Rudolph manufactures a selection of face masks for use with custom adapters to meet the requirements of applications where a mask is used on a subject. Applications include adapting a mask to tubing, mask to a flow sensor, mask to a valve or other special applications.

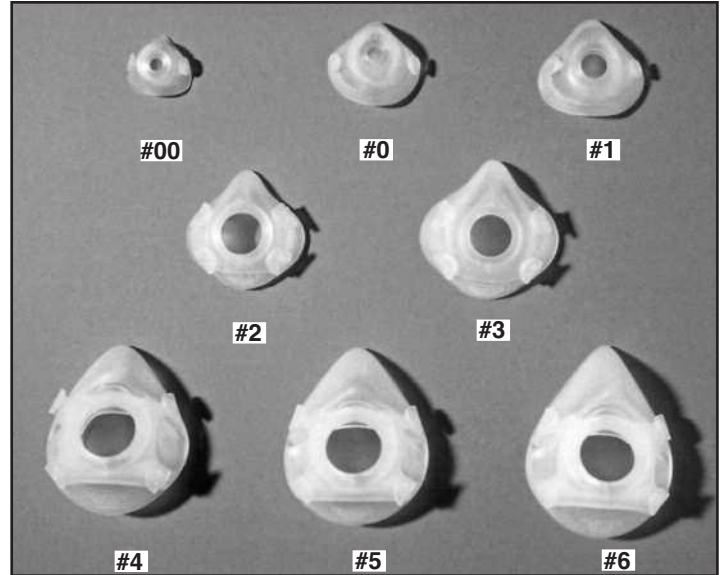
These masks are single piece molded of translucent **silicone rubber** which is durable, resilient, comfortable to facial skin, resistant to oxidation and chemical degradation and designed with a sealing flange for added reliability and comfort. The adapters can be manufactured of various plastics to your specifications, ie: Polycarbonate, PET (Thermoplastic Polyester Plastic), Polysulfone, etc... An adapter mates to the mask with a leak free **flange-in-groove type connection** (refer to illustration) that snaps in for ease of assembly and dis-assembly.

The mask is held in place on the face comfortably and snugly with a polyester net **head cap assembly** which incorporates stretch velcro straps with locking-type clips.

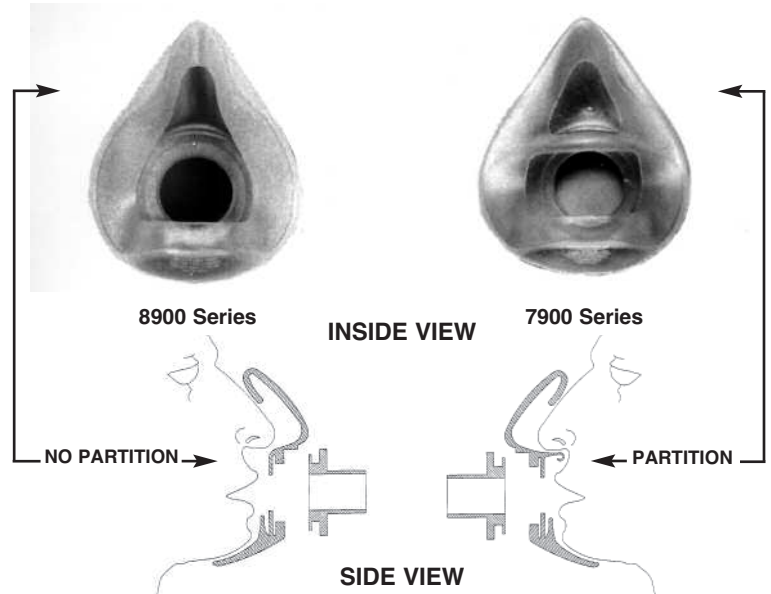
The face mask number ( #00, #0, #1, #2, #3, #4, #5, or #6) and size is integrally molded in the chin area on the inside and outside of each mask.

### SPECIAL FEATURES

- **Eight sizes** available in **Nasal & Mouth Breathing** Style Mask (8900 Series).
- **Five sizes** available in **Mouth Breathing Only** Style Mask (7900 Series)
- With a **Custom/Special Adapter**, the silicone masks can be used in various applications where a mask is used.
- The mask allows vocal communication between the subject and the technician.
- \* The **Head Cap design** ensures that the mask has a **secure fit** on the face.
- Four sizes of Head Cap/Harness assemblies.
- Custom/Special adapters designed & manufactured per your specific requirements.
- **Private Labeling** available.



Premature #00, Neonatal #0, Infant #1, Pediatric Small #2, Pediatric Large #3, Adult Small #4, Adult Medium #5, Adult Large #6



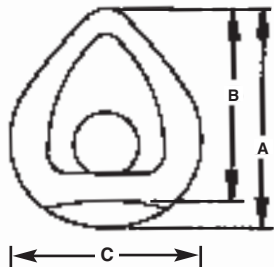
Side view illustrating the 8900 Series Masks (left) with the nose and mouth area open (no partition) allowing for Nasal & Mouth Breathing as compared to the 7900 Series Mask (Right) with the nose area closed (partition) allowing for Mouth Breathing only.

### MASK GEOMETRY FEATURES

- **Leak Free Seal** - the wide face sealing flange conforms to face contour without creating pressure points.
- **Chin Nest** - prevents slipping, especially when perspiring during exercise testing.
- **Four buttons** are an integral part of the face mask piece. Two buttons are positioned on each side of the face mask such that the straps pull the mask against the subjects' face along the chin and the upper lip.

**PHYSICAL CHARACTERISTICS**

**Rudolph Nasal & Mouth Breathing Mask Face Piece (8900 Series)**

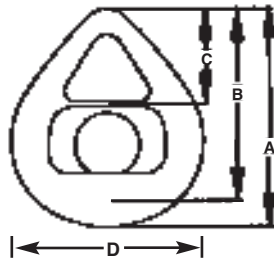


Size	Series	Face Piece P/N	DIMENSIONS				**DEAD SPACE		WEIGHT gm
			A inch(mm)	B inch(mm)	C inch(mm)	D inch(mm)	SPACE ml		
#6 Adult Large	8920	669050	5.3 (134.6)	4.8 (122.7)	4.1 (104.1)	3.0 (74.9)	49.1	110	
#5 Adult Medium	8930	669051	4.9 (125.2)	4.5 (113.0)	4.1 (104.1)	2.7 (67.3)	46.7	107	
#4 Adult Small	8940	669052	4.6 (117.6)	4.0 (101.6)	4.1 (104.1)	2.6 (66.6)	40.2	112	
#3 Pediatric Large	8950	669053	4.0 (101.6)	3.5 (88.9)	3.9 (99.1)	1.7 (43.2)	31.5	65	
#2 Pediatric Small	8960	669072	3.5 (88.9)	2.9 (73.7)	3.5 (88.9)	1.4 (35.6)	20.0	47	
*#1 Infant	8970	669073	2.9 (73.7)	NA	3.1 (78.7)	1.2 (30.5)	14.1	33	
*#0 Neonatal	8980	669074	2.5 (63.5)	NA	2.6 (66.0)	1.1 (27.9)	5.2	28	
*#00 Premature	8990	669075	1.8 (45.7)	NA	1.8 (45.7)	.8 (20.3)	1.8	11	

\*Only available in 8900 Series, Nasal & Mouth Breathing Type.

\*\*Rebreathing Volume Dead Space (face piece only).

**Rudolph Mouth Breathing Mask Face Piece (7900 Series)**



Size	Series	Face Piece P/N	DIMENSIONS					**DEAD SPACE		WEIGHT gm
			A Inch(mm)	B inch(mm)	C inch(mm)	D inch(mm)	E inch(mm)	SPACE ml		
#6 Adult Large	7920	669040	5.5 (139.7)	4.8 (122.7)	2.4 (61.2)	4.1 (104.1)	3.0 (74.9)	31.3	135	
#5 Adult Medium	7930	669041	5.1 (129.5)	4.5 (113.0)	2.2 (54.6)	4.2 (106.7)	2.7 (67.3)	27.1	126	
#4 Adult Small	7940	669042	4.8 (121.9)	4.2 (117.6)	1.9 (47.5)	4.1 (104.1)	2.6 (66.6)	26.2	125	
#3 Pediatric Large	7950	669044	4.0 (101.6)	3.5 (88.9)	1.7 (43.2)	3.9 (99.1)	1.7 (43.2)	23.8	66	
#2 Pediatric Small	7970	669071	3.4 (86.4)	3.0 (74.9)	1.4 (35.6)	3.5 (88.9)	1.4 (35.6)	9.3	48	

\*\*Rebreathing Volume Dead Space (face piece only).

**GUIDELINES FOR MASK FIT SELECTION**

Mask Size	Age Fit	Series Model No. (Nasal & Mouth Breathing Type)	Series Model No. (Mouth Breathing Only Type)
#00 Premature	Less than 38 week Gestation	8990	N/A
#0 Neonatal	Birth to 1 Month	8980	N/A
#1 Infant	1-12 Months	8970	N/A
#2 Pediatric Small	1-5 Years	8960	7970
#3 Pediatric Large	4-9 Years	8950	7950
#4 Adult Small	9 Years to Small Adult	8940	7940
#5 Adult Medium	Large Adolescent to Medium Adult	8930	7930
#6 Adult Large	Adult Large	8920	7920

**ORDERING INFORMATION - Single Piece Silicone Rubber Face Mask. Adapter & Head Cap Assembly ordered separately.**

**Two Types Available:**

1. NASAL & MOUTH BREATHING FACE MASK, 8900 SERIES
2. MOUTH BREATHING ONLY FACE MASK, 7900 SERIES

**P/N-SERIES NASAL & MOUTH BREATHING FACE MASK, 8900 SERIES**

669050-8920	Adult Large #6 Face Piece Only
669051-8930	Adult Medium #5 Face Piece Only
669052-8940	Adult Small #4 Face Piece Only
669053-8950	Pediatric Large #3 Face Piece Only
669072-8960	Pediatric Small #2 Face Piece Only
669073-8970	Infant #1 Face Piece Only
669074-8980	Neonatal #0 Face Piece Only
669075-8990	Premature #00 Face Piece Only

**P/N-SERIES MOUTH BREATHING ONLY FACE MASK, 7900 SERIES**

669040-7920	Adult Large #6 Face Piece Only
669041-7930	Adult Medium #5 Face Piece Only
669042-7940	Adult Small #4 Face Piece Only
669044-7950	Pediatric Large #3 Face Piece Only
669071-7970	Pediatric Small #2 Face Piece Only

**ACCESSORIES:**

**Adapters** - Manufactured Custom per your requirements. User specials and OEM inquiries invited.

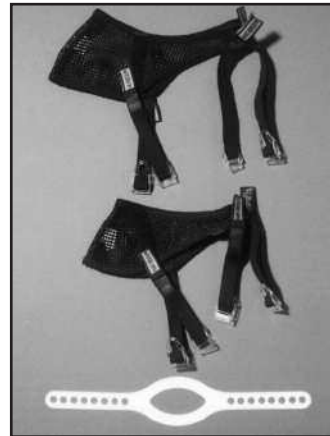
**Head Cap Assembly & Harness**

P/N	Description
200525	Head Cap (Adult Size), Straps & Locking Clips
201079	Head Cap (Pediatric Large Size), Straps & Locking Clips
201133	Head Cap (Pediatric Small Size), Straps & Locking Clips
600077	Head Harness (Infant, Neonatal & Premature Size)

**CREDITS**

• Velcro is a trademark of Velcro U.S.A., Inc.

**HEAD CAP ASSEMBLIES AND HEAD HARNESS**



**TOP: Adult Head Cap, Straps & Locking Type Clips**

**MIDDLE: Pediatric Large & Small Head Caps, Straps & Locking Type Clips**

**BOTTOM: Infant, Neonatal & Premature Head Harness (Silicone)**

**CLEANING**

This product requires **special** cleaning and care, which is described in our **Cleaning, Disinfection, Sterilization and Maintenance Data Sheet 691194**. Request this data sheet if not already in your possession. Make sure you fully comprehend this 691194 data sheet before proceeding with cleaning this Rudolph product.

**GENERAL INFORMATION**

- **Caution:** Federal Law restricts this device to be sold by or on the order of a physician.
- **Packaged:** Individually polyethylene bagged and shipped clean, **non-sterile**.
- User specials and OEM inquiries invited.
- Beards are a factor which can possibly cause leakage.